



MCAE

Windchill Overview

Dave Martin

dmartin@creowindchill.com

www.creowindchill.com

Major Product Development Systems

Computer Aided
Design

CAD

Product Lifecycle
Management

PLM

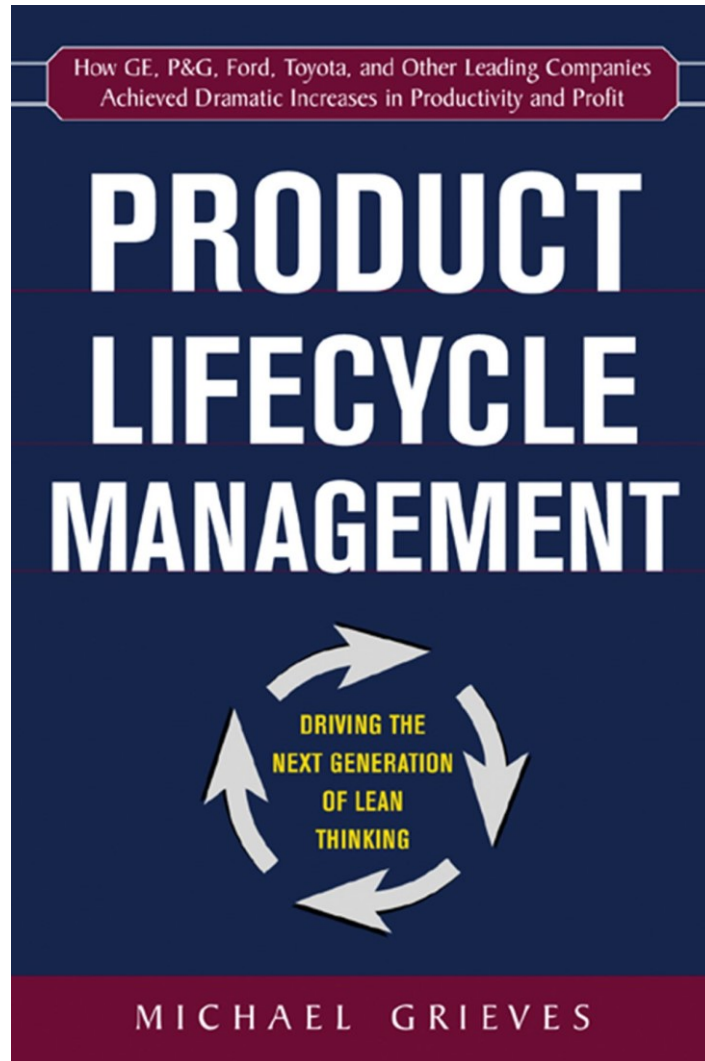
Manufacturing
Execution & Enterprise
Resource Planning

MES

ERP




Product Lifecycle Management



“Product Lifecycle Management (PLM) is an integrated, information-driven approach comprised of people, processes/practices, and technology to all aspects of a product’s life, from its design through manufacture, deployment, and maintenance – culminating in the product’s removal from service and final disposition. **By trading product information for wasted time, energy, and material** across the entire organization and into the supply chain, PLM drives the next generation of lean thinking.”

What is Windchill?

- Platform / Architecture
- Web-based
- Highly configurable and customizable
- Modules
 - PDMLink
 - MPMLink
 - ProjectLink
 - Many, many more



The screenshot displays the Windchill web interface for a CAD assembly. The browser title is "Assembly - c16_supercharger_on_c6_engine.asm, A.1". The interface includes a navigation bar with tabs for "Details", "Structure", "Content", "Related Objects", "Changes", "History", "Traceability", and "Relationship Explorer". The main content area is titled "Visualization and Attributes | More Attributes" and features a 3D model of a supercharger assembly on the left and a metadata panel on the right. The metadata panel includes the following information:

File Name:	c16_supercharger_on_c6_engine.asm
Number:	C16_SUPERCHARGER_ON_C6_ENGINE.ASM
Name:	test_asm
Status:	Checked in
Modified By:	Demo, User
Last Modified:	2014-02-25 16:04 EST

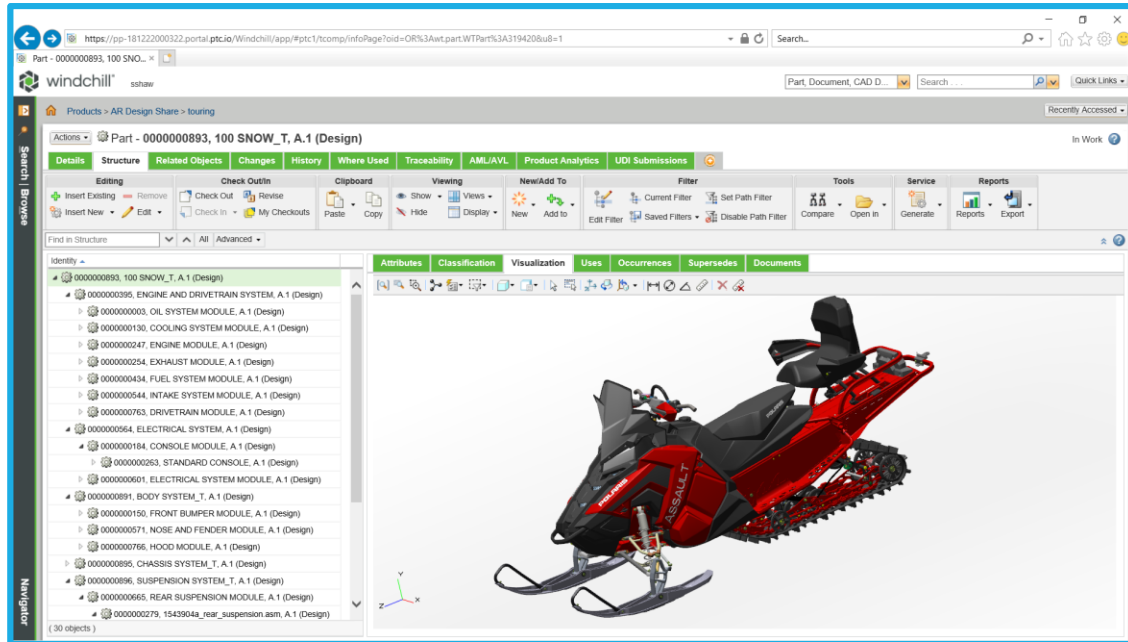
Below the metadata panel is a "General" section with the following details:

Version:	A.1	Generic:	No
Authoring Application:	Creo	Instance:	No
Type:	CAD Document	Missing Dependents:	No
Document Category:	Assembly	Incomplete Object:	No
Document Subcategory:		Description:	
Checkin Comments:			

At the bottom is a "Security Labels" section with the following information:

Corporate IP Level:	High
Export Control:	Restricted

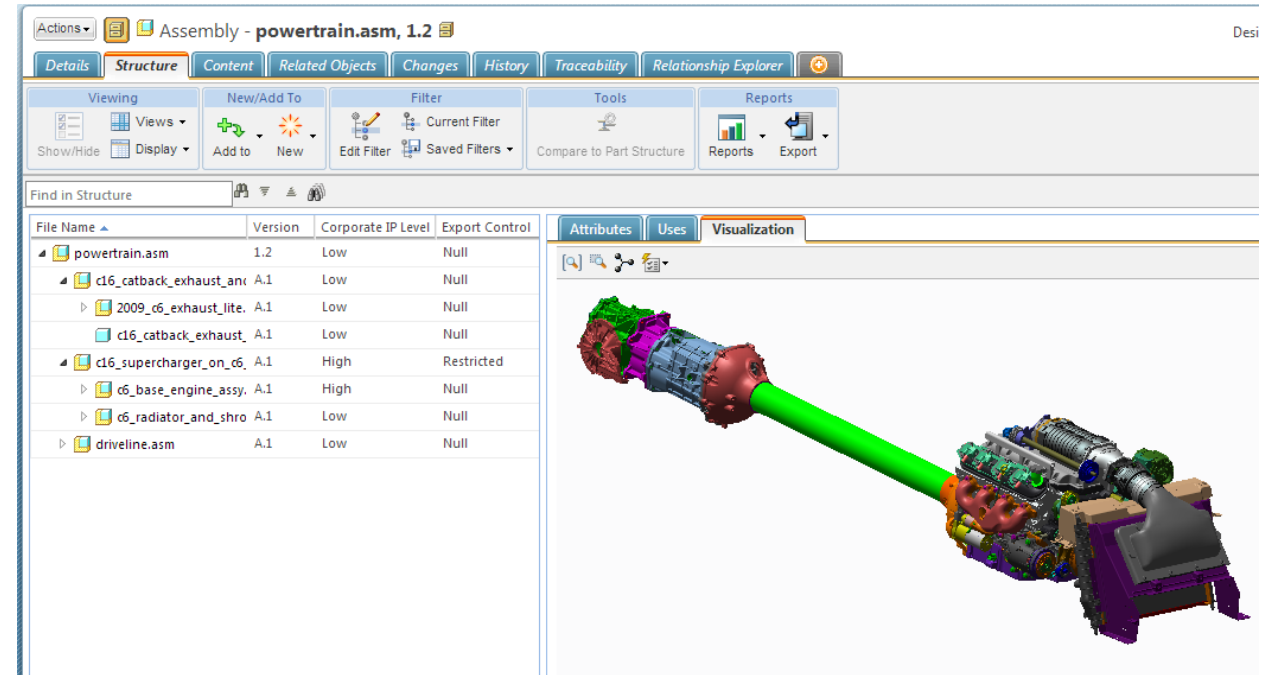
Windchill PLM Functions



- CAD Data Management
- Document Management
- Release Management
- Change Management
- BOM Management
- Manufacturing Process Planning
- Supplier Management
- Collaboration
- Visualization

CAD Data Management

- Vault
- Access control
- Version history
- Revision control
- Metadata
- Product Structure
- Promotions & Releases
- Notifications

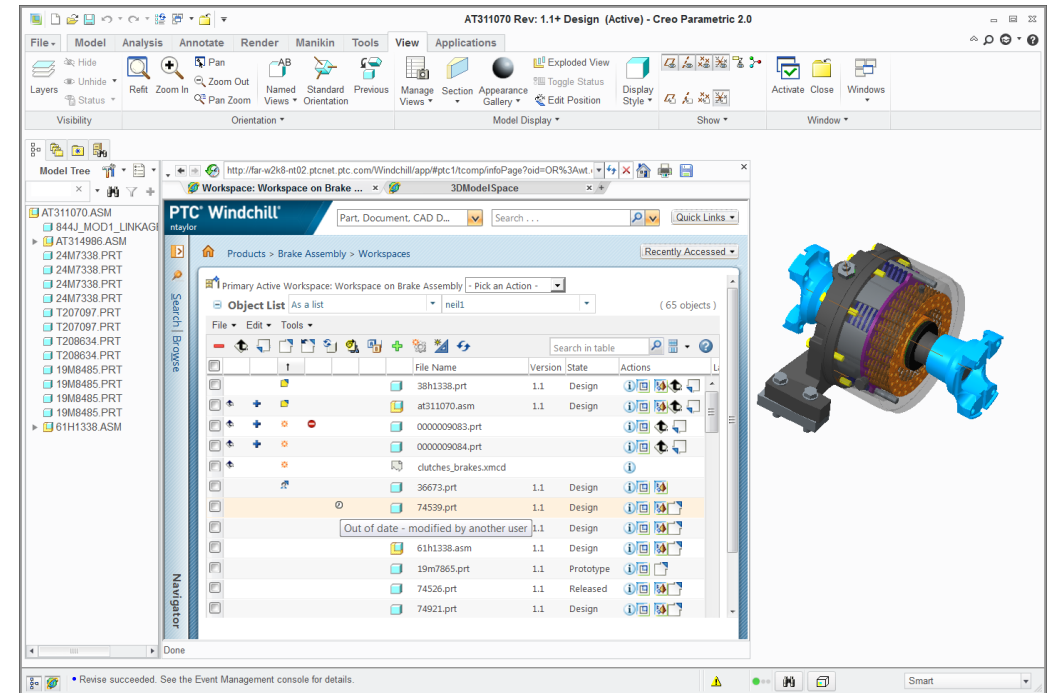




*Even if your products aren't complex,
your processes are.*

Windchill Implementation

- PDMLink
- MPMLink
- ProjectLink
- Windchill Workgroup Manager
- ThingWorx
- ThingWorx Navigate



Email dmartin@creowindchill.com

for more information or a demo!



Thank You!

<https://www.creowindchill.com>